



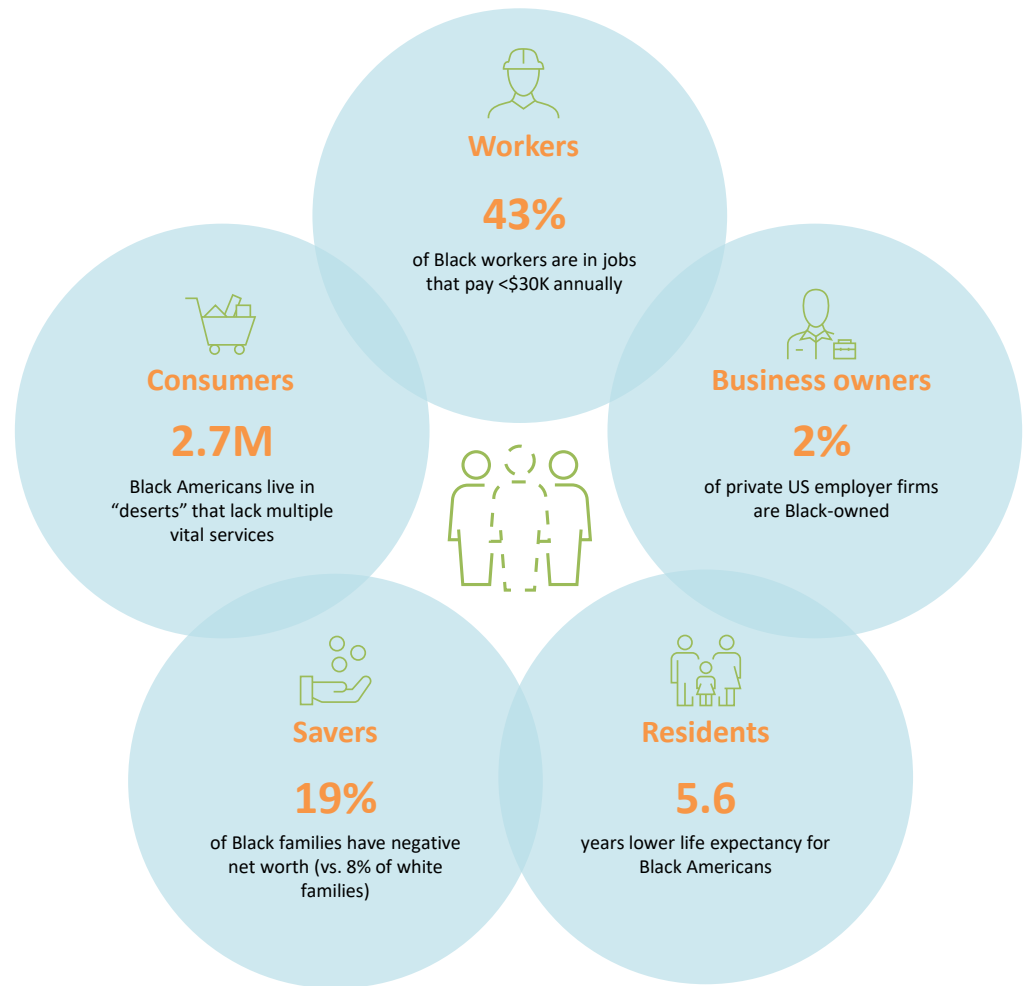
# CEWD

Center for Energy  
Workforce Development

### Career Cluster Model - Grid View

<p><b>Advanced Manufacturing</b>  Engineering  Health, Safety &amp; Quality Assurance  Industrial Machinery  Production &amp; Automation  Robotics</p>	<p><b>Agriculture</b>  Agricultural Commerce  Agricultural Technology &amp; Automation  Animal Science  Food Science &amp; Processing  Plant Systems  Water Systems</p>	<p><b>Arts, Entertainment &amp; Design</b>  Design &amp; Digital Arts  Fashion &amp; Interiors  Film &amp; Broadcasting  Fine Arts  Lighting &amp; Sound Engineering  Performing Arts</p>	<p><b>Construction</b>  Architecture &amp; Civil Engineering  Construction Planning &amp; Development  Operators &amp; Maintenance  Skilled Trades</p>
<p><b>**Digital Technology</b>  Data Science &amp; AI  IT Support &amp; Services  Network Systems &amp; Cybersecurity  Software Solutions  Unmanned Vehicle Technology  Web &amp; Cloud</p>	<p><b>Education</b>  Early Childhood Development  Education Administration  Learner Support &amp; Community Engagement  Teaching, Training &amp; Facilitation</p>	<p><b>Energy &amp; Natural Resources</b>  Clean &amp; Alternative Energy  Conservation &amp; Parks  Ecological Research &amp; Development  Environmental Protection  Resource Extraction  Utilities</p>	<p><b>Financial Services</b>  Banking &amp; Credit  Financial Strategy &amp; Investments  Insurance  Real Estate</p>
<p><b>Health &amp; Human Services</b>  Behavioral Health  Biotechnology Research &amp; Development  Community &amp; Social Services  Health Data &amp; Administration  Personal Care Services  Physical &amp; Holistic Health</p>	<p><b>Hospitality &amp; Events</b>  Accommodations  Conferences &amp; Events  Culinary &amp; Food Services  Travel &amp; Leisure</p>	<p><b>**Management &amp; Entrepreneurship</b>  Accounting  Business Information Management  Business Management &amp; Operations  Entrepreneurship &amp; Small Business  Project Management  Regulation</p>	<p><b>**Marketing &amp; Sales</b>  Marketing &amp; Advertising  Market Research, Analytics &amp; Ethics  Retail &amp; Customer Experience  Strategic Sales</p>
<p><b>Public Service &amp; Safety</b>  Emergency Response  Judicial Systems  Local, State &amp; Federal Services  Military &amp; National Security  Public Safety</p>	<p><b>Supply Chain &amp; Transportation</b>  Air &amp; Space Transportation  Ground &amp; Rail Transportation  Maintenance &amp; Repair  Marine Transportation  Planning &amp; Logistics  Purchasing &amp; Warehousing</p>	<p><b>** = Cross-Cutting Clusters</b>  Denote careers that overlap in all industries, highlighting the versatile and interconnected nature of today's workforce. They can stand on their own or be contextualized in each cluster and emphasize the need for adaptability in navigating the modern economy.</p>	<p><b>Notes:</b>  <i>Clusters are listed in alphabetical order.</i>  <i>Clusters &amp; Sub-Clusters represent the entire world of work (see definitions).</i>  <i>Programs of Study are now in local state frameworks.</i></p>

That said, the reality remains that disparities exist in every dimension of Black economic life in the US



Source: : McKinsey Institute for Black Economic Mobility - [The Economic State of Black America](#); KFF (for post-pandemic life expectancy disparities)



Hire PowHER

Workforce Intermediary  
Action Network

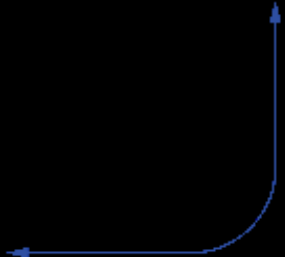
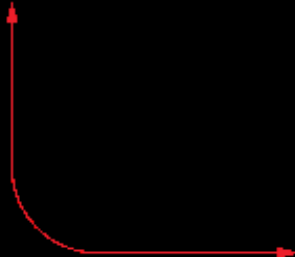


Energy Educator  
Resource Center



**Pathways to Equitable  
Energy Employment**

Energy Skills  
Academy



Pre-Apprenticeship  
Pathways











Post

# Diamond Shreddies

Made with 100% Whole Grain Wheat

Cereal

**Sensible Solution™**  
• Low in Fat  
• A Source of Fiber  
• A Source of 9 Essential Nutrients



**OLD**  
(Boring)

**NEW**

**Diamond  
Shreddies**



**NEW**  
(Exciting!)



## DEBI ROADMAP for Industry Change

with Introduction by Government



SCA



# 2023 Energy Workforce Survey Results

Executive Summary





# A Workforce Development Primer for **ENERGY LEADERS**

Understanding Workforce Development and  
Creating Action Agendas for the Energy Sector

© 2018 by the Center for Energy Workforce Development. All rights reserved.





**Cornell Johnson**

Director, Diversity Equity & Inclusion  
Center for Energy Workforce Development  
[cornell@cewd.org](mailto:cornell@cewd.org)

